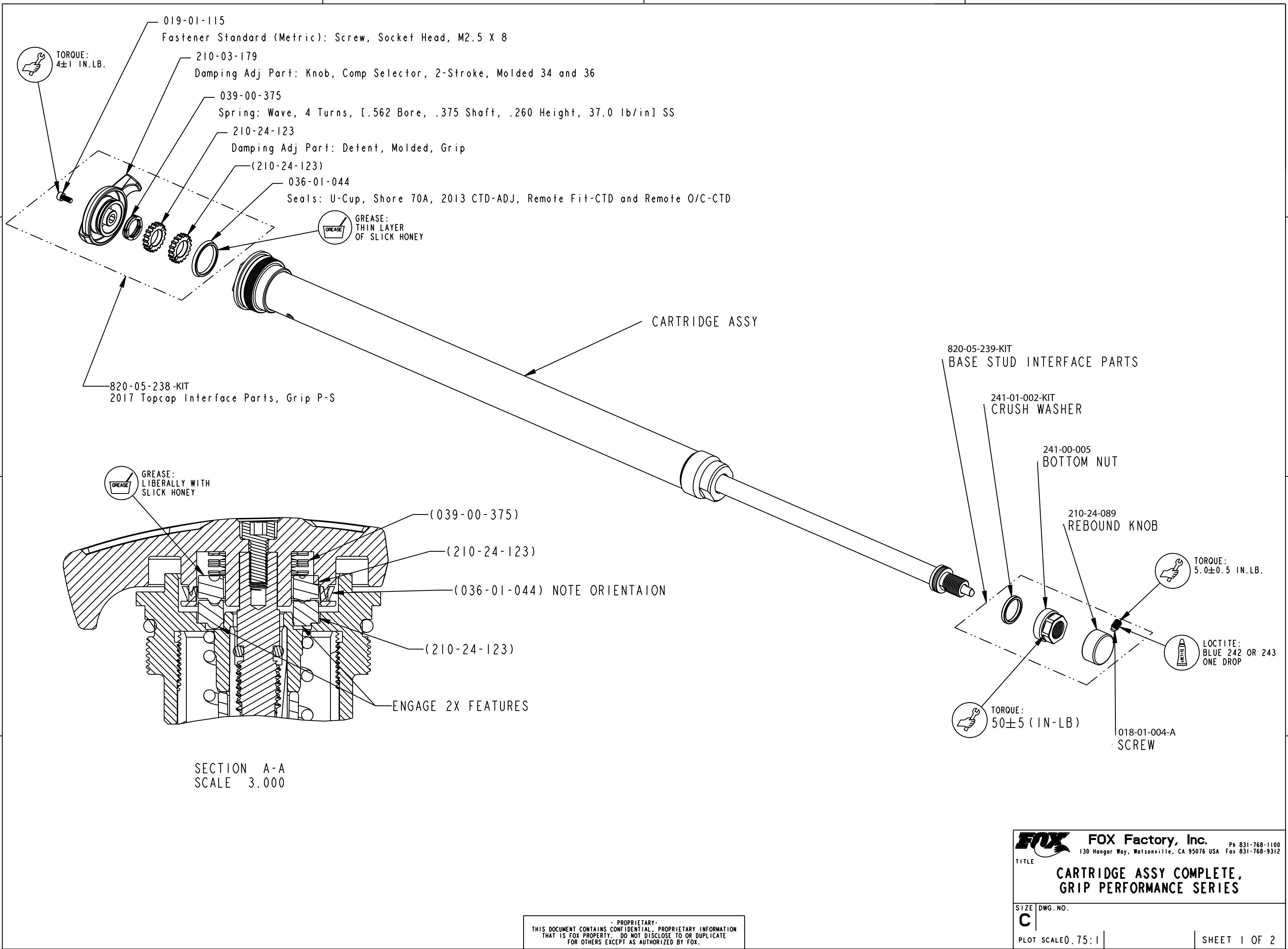


4

3

2

1



TORQUE:
4±1 IN.LB.

019-01-115
Fastener Standard (Metric): Screw, Socket Head, M2.5 X 8

210-03-179
Damping Adj Part: Knob, Comp Selector, 2-Stroke, Molded 34 and 36

039-00-375
Spring: Wave, 4 Turns, [.562 Bore, .375 Shaft, .260 Height, 37.0 lb/in] SS

210-24-123
Damping Adj Part: Detent, Molded, Grip

(210-24-123)

036-01-044
Seals: U-Cup, Shore 70A, 2013 CTD-ADJ, Remote Fit-CTD and Remote O/C-CTD

GREASE:
THIN LAYER
OF SLICK HONEY

CARTRIDGE ASSY

820-05-239-KIT
BASE STUD INTERFACE PARTS

241-01-002-KIT
CRUSH WASHER

241-00-005
BOTTOM NUT

210-24-089
REBOUND KNOB

TORQUE:
5.0±0.5 IN.LB.

LOCTITE:
BLUE 242 OR 243
ONE DROP

TORQUE:
50±5 (IN-LB)

018-01-004-A
SCREW

GREASE:
LIBERALLY WITH
SLICK HONEY

(039-00-375)

(210-24-123)

(036-01-044) NOTE ORIENTAION

(210-24-123)

ENGAGE 2X FEATURES

SECTION A-A
SCALE 3.000

FOX FOX Factory, Inc. Ph 831-768-1100
130 Hangar Way, Watsonville, CA 95076 USA Fax 831-768-9312

TITLE
**CARTRIDGE ASSY COMPLETE,
GRIP PERFORMANCE SERIES**

SIZE DWG. NO.
C

PLOT SCALE 0.75:1

SHEET 1 OF 2

PROPRIETARY
THIS DOCUMENT CONTAINS CONFIDENTIAL, PROPRIETARY INFORMATION
THAT IS FOX PROPERTY. DO NOT DISCLOSE TO OR DUPLICATE
FOR OTHERS EXCEPT AS AUTHORIZED BY FOX.

4

3

2

ProE ASSEM